



# a+d

ARCHITECTURE+DESIGN

A JOURNAL OF INDIAN ARCHITECTURE VOL XXII NO 10 OCTOBER 2005 Rs 125

## **BIONIC TALK** **FATHER-SON PRACTICES**



✦ PROJECT FEATURES

# Tacit Communiqué

*VIGR School, Gujarat*

Architects: **Group Seven Architects & Planners Pvt Ltd**, Mumbai  
Text by **Savitha Hira**





The Vallabhashram International Girls Residential School (VIGR), located at Valsad in South Gujarat, is a donor enterprise from Swami Hariprasadji. With the onus on pragmatic incorporation of the vision of Swamiji, the design program envisages to inculcate a high standard of learning with a disciplined lifestyle among young girls in emerging India.

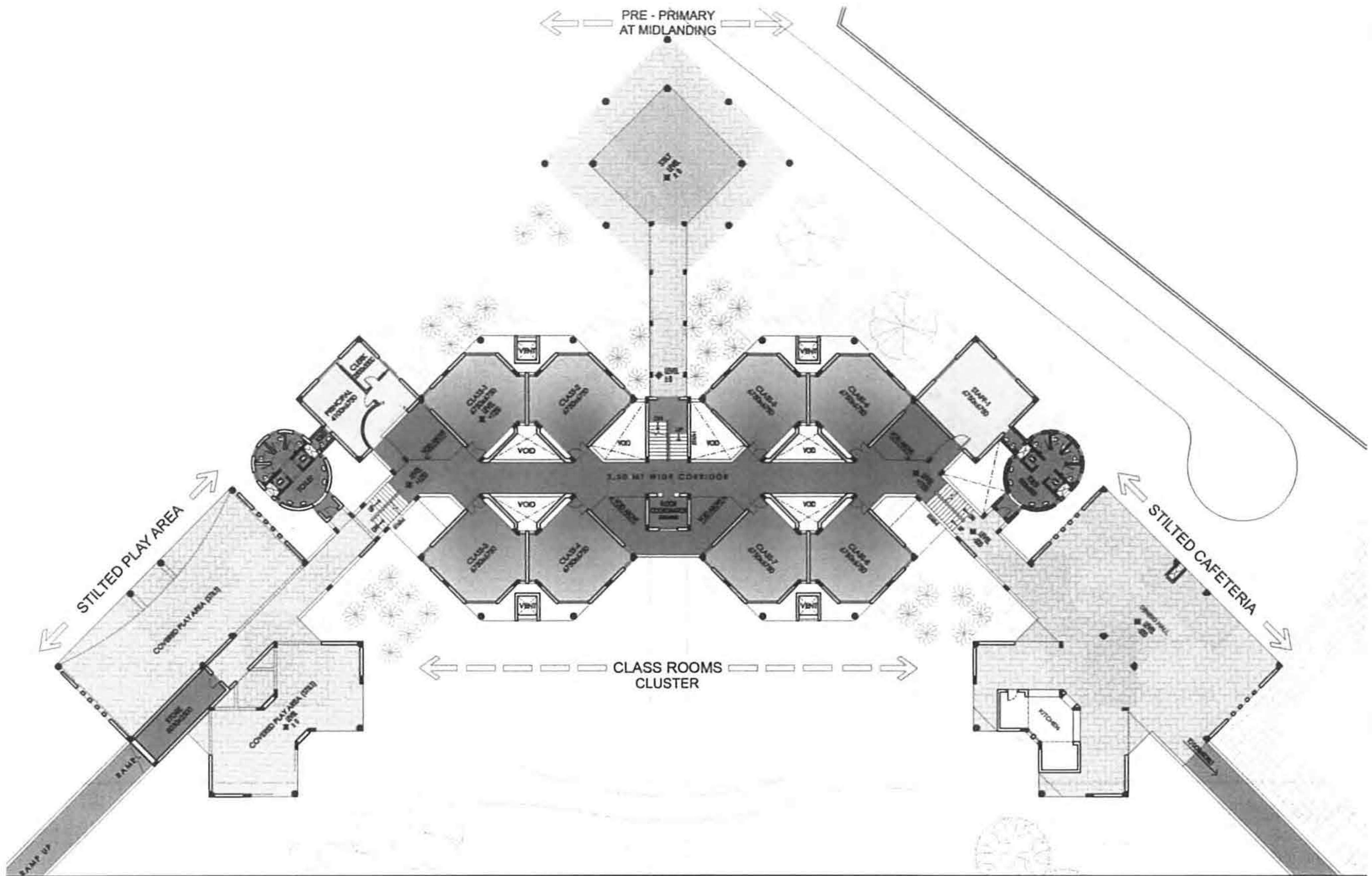
Working on the project in four phases – the main

school building, the sports complex forming an integral aspect of the entire program, a multi-purpose hall with amphitheatre, dormitory and staff housing, a state-of-the-art manifesto were incorporated into the innate infrastructure. Contextual in treatment and elevation, the main school building is horizontally spread across approximately 60,000sq ft of the 20-acre plot and is a silent simulation of the hillocks in the landscaped



1 & 2. The green, blue and yellow symbolically identify three levels of classroom cluster  
3. The classrooms overlooking the main field



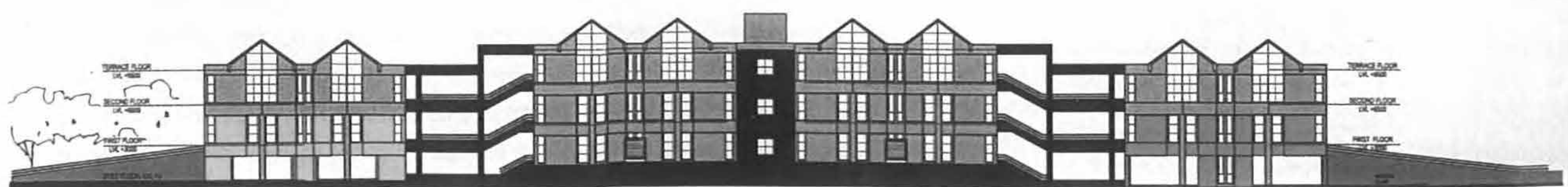


FIRST LEVEL PLAN

distance. The main entry is designed on mid-level with the convenience of moving either one level up or one level down to access the three sections – the primary, middle and high school. A combination of landings and mid-landings create variation in the assemblage of functions as all support areas viz, art, craft, library, laboratory, and audiovisual room, etc, are positioned on mid-landings while the classrooms are positioned at 45 degrees to the elevation of the building.

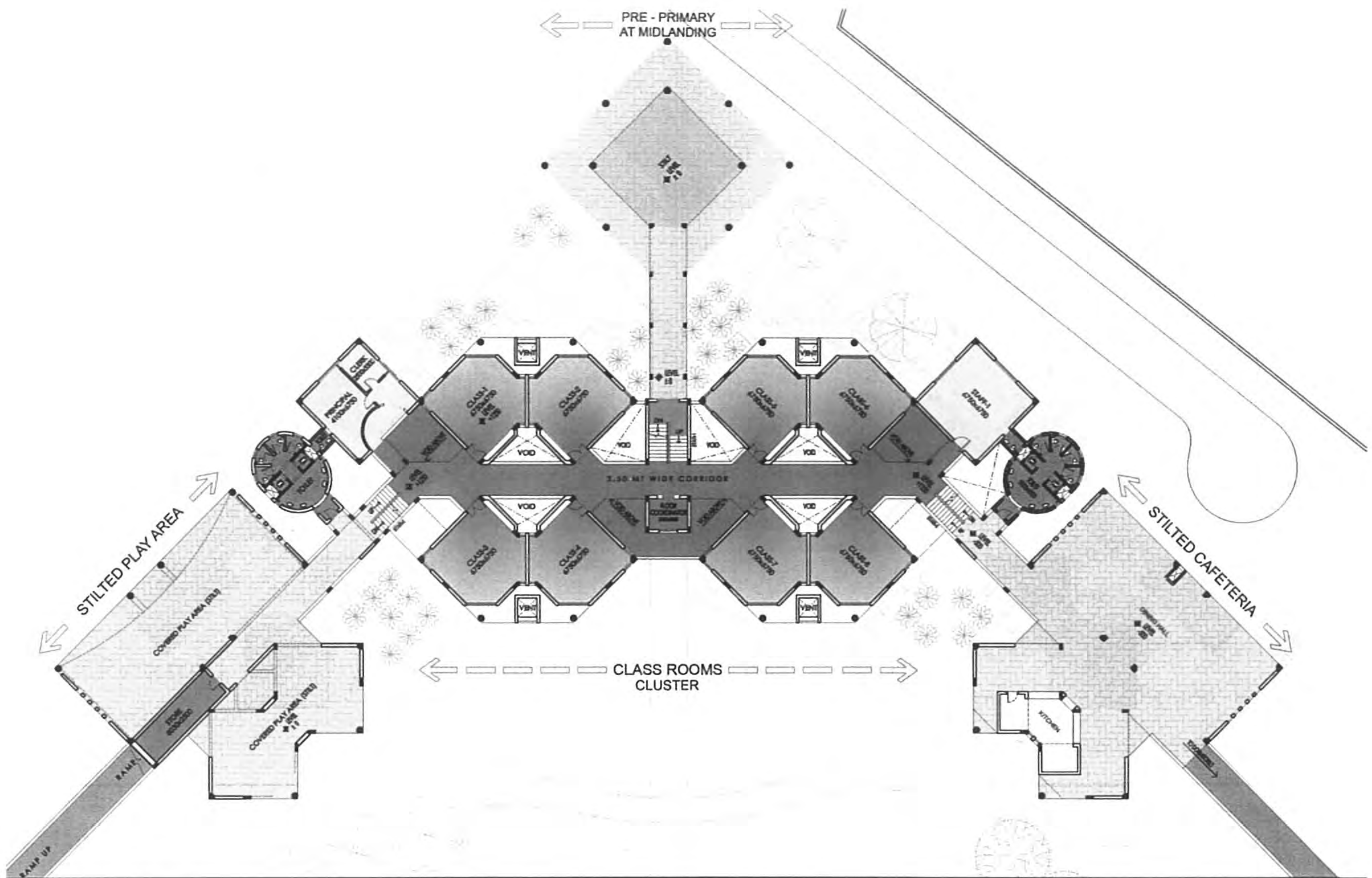
Various gestures have been created. When one moves from one point to another, compositions of the positive

and negative spaces unfold amidst three basic floor colours (yellow, blue and green) into a congenial interior of tubular steel, exposed slabs, bricks and finished walls in neutral hues. The building is designed to ensure maximum infiltration of natural light and ventilation with an abundance of 'breathing pockets' which can be read as empty spaces that break the monotony of a conventional corridor. Also present are skylights that bring in natural light interspersed with articulate views of the greenery outside. Such visual connectivity brings the outdoors inside and is a silent lesson in space and light



FRONT ELEVATION





FIRST LEVEL PLAN

distance. The main entry is designed on mid-level with the convenience of moving either one level up or one level down to access the three sections – the primary, middle and high school. A combination of landings and mid-landings create variation in the assemblage of functions as all support areas viz, art, craft, library, laboratory, and audiovisual room, etc, are positioned on mid-landings while the classrooms are positioned at 45 degrees to the elevation of the building.

Various gestures have been created. When one moves from one point to another, compositions of the positive

and negative spaces unfold amidst three basic floor colours (yellow, blue and green) into a congenial interior of tubular steel, exposed slabs, bricks and finished walls in neutral hues. The building is designed to ensure maximum infiltration of natural light and ventilation with an abundance of 'breathing pockets' which can be read as empty spaces that break the monotony of a conventional corridor. Also present are skylights that bring in natural light interspersed with articulate views of the greenery outside. Such visual connectivity brings the outdoors inside and is a silent lesson in space and light



FRONT ELEVATION